

PENNSYLVANIA ANGUS ASSOCIATION

CELEBRATING OVER 60 YEARS AS AN ASSOCIATION

www.paangus.org

March, 2017

INSIDE THIS ISSUE :

NEWS! NEWS! JUNIOR NEWS!

Finest Female Sale Info inside

3/31/17

44th PA Performance Tested Bull

Sale 3/31/17

Did you remember to pay your dues?



24th Annual Pennsylvania's Finest

Angus Female Sale

Friday, March 31, 2017

Approx: 2:30 pm Following Bull Test Sale

**Held at the Livestock Evaluation Center, PA Dept. of Ag
Pennsylvania Furnace, PA**

These Breeders Will Be Represented:

Cash Family Angus, York, PA

Double C Farm, Greencastle, PA

Ebony Farm, West Sunbury, PA

ErReR Hill Farms, Friedens, PA

GND Angus, West Alexander, PA

Grand View Farm, Tyrone, PA

Hain Farm, New Freedom, PA

Hawthorn Valley Farm, Richland, PA

Herr Angus Farm, Nottingham, PA

JK Cattle Co., Conneautville, PA

Just Enuff Angus, Nazareth, PA

New-Paradigm Farms, Chittenango, NY

Lavigne Angus Farm, Foster, RI

Mitchell Farms, Reinholds, PA

Oak Grove Angus Farms, Frenchtown, NJ

Penn State University, University Park, PA

Rains Angus, Mercer, PA

Rutledgedale Farms, Tyler Hill, PA

Slaytons' Beardance, Bedford, PA

Smeal Farms, LLC, Houtzdale, PA

Spring Hope Farm, Nottingham, PA

Stewart Angus, Rome, PA

Selling 50 Hand Selected Lots!

Productive Pairs –

Bred Heifers –

Elite Show Heifers

Sale Sponsored by: Pennsylvania Angus Association

Sale Chairman: Gene Trowbridge 570.905.4378

For your free reference sale booklet, contact anyone in the office of the Sale Managers.

**TOM BURKE, KURT SCHAFF, JEREMY HAAG, AMERICAN ANGUS HALL OF FAME at the WORLD ANGUS HEADQUARTERS, Box 660, Smithville, MO 64089.
Phone 816/532-0811. Fax 816/532-0851. Email: angushall@earthlink.net * www.angushall.com**



**2017 PA ANGUS ASSOCIATION
OFFICERS AND DIRECTORS**

President

Wendall Landis
2785 Tadpole Rd. PA Furnace, PA 16865
814-692-7759
wlandispsu@gmail.com

Vice-President

Chad Cash
983 Wetherburn Dr. York, PA 17404
717-779-0614
chadcash2@comcast.net

Secretary

Jamie Brozman
354 Township Line Rd. Nazareth, PA 18064
Phone: 484-221-3455
justenuffangus@gmail.com

Treasurer

Brad Bishard
1787 Seven Valleys Rd. York, PA 17408
Phone: 717-792-9268
bradbishard@hotmail.com

Directors

Ryan Nolt	Dennis Byrne
Jim Kuhn	Deric Horting
Keith Rooker	Del Voight
John Nichols	Mindy Seese
Tim Livingston	Kyle Grim
Butch Otto	Greg Mckean

Advertising Rates

Full Page	\$100.00
½ Page	\$75.00
Business Card	\$100.00/year
E-blast	\$25.00

**Next Deadline 4/10/17 to place advertising,
submit news, or an editorial comment contact:**

Jamie Brozman – 484-221-3455
justenuffangus@gmail.com

**2017 PA ANGUS ASSOCIATION
MEMBERSHIP (NEW/RENEWAL)**

Please complete this form and return.

PLEASE PRINT !!

OWNER

FARM NAME

ADDRESS

CITY/STATE/ZIP

PHONES-HOME/CELL/FAX/FARM

EMAIL/WEBSITE ADDRESS

COUNTY

_____ \$35 – ONE YR FARM MEMBERSHIP
 _____ \$2 – LADIES AUXILLARY MEMBERSHIP
 _____ \$5 – JUNIOR LIFETIME MEMBERSHIP
 (THRU AGE 21).

PLEASE INCLUDE JR NAME & BD

_____ **TOTAL MEMBERSHIP DUES**

_____ Business Card Ad, Newsletter \$100/yr

_____ **TOTAL ENCLOSED**

**Make check payable to PA ANGUS ASSOCIATION
mail to Jamie Brozman, Secretary,
354 Township Line Rd.
Nazareth, PA 18064;
484-221-3455
Justenuffangus@gmail.com**

**PA ANGUS BOARD OF DIRECTORS
MEETING PRIOR TO THE BULL SALE**

MARCH 31, 2017

(Approximately 10:00 a.m.)

AT THE LIVESTOCK EVALUATION CENTER, PA
FURNACE, PA., IN THE CONFERENCE
ROOM, room under the bleachers in the sale
arena.



**The Pennsylvania Angus
Association mourns the loss of
long time member Harry
Stambaugh 6/21/32 - 3/2/2017.**



Message from our President

Dear Angus Breeders,

Well I guess we are getting our winter weather in March this year! From talking to some of you, we fared pretty well here in Centre County. Our immediate area ranged from 5-7 inches, a far cry from the 24+ inches I heard about. I hope all that were calving during 'Stella' made out as well as you could. Snow and cold always adds extra work and stress.

In this issue you will find the final tabulations for the Angus bulls that were evaluated during the annual PA Performance Bull Test. You should have also received a sale catalog for the 24th Annual PA Finest Female Sale. Both the Performance Tested Bull Sale and the Finest Female Sale will take place on Friday, March 31st. Later that day, the PA Junior Angus Association will hold their annual semen sale – take advantage of this opportunity to add new Angus genetics to your herd. All of these events will take place at the PA Livestock Evaluation Center located in PA Furnace, PA. Again, our association would appreciate your help at our events this spring.

Our PA Angus Breeders Show is early this year, June 15-17, with an entry deadline of May 15th. It has been brought to my attention that the hotel blocks for the show in Huntingdon are in place - do not wait until after the blocks are lifted to reserve your rooms. There are some major construction projects going on in the Huntingdon area and hotel rooms could be hard to find outside of the room blocks. We look forward to this fun, family oriented event!

I hope to visit with many of you at our Angus events at the end of March and wish you all a great calving season and green pastures under all of this snow!

Sincerely,

Wendall Landis

President, PA Angus

The Pennsylvania Junior Angus Association will be holding a **Semen Sale** at the PA Finest Female Sale following the female sale on **March 31, 2017**.

5 Units - Musgrave Aviator

5 Units – Baldridge Titan A139

5 Units - McKellar Legend 3320

5 Units – BCII MLA Next Up 015

5 Units – CCC Womack Ace B505

5 Units – Musgrave Sky High 1535

10 Units – BCA Flawless

10 Units – PCC Witten 111A

10 Units – HF Black Ace 30B

10 Units of Lazy JB Tito 4941

10 Units – Cherry Knoll Pleasant Classen 142

4 Grade 1 Embryos

GAR Sunrise x GAR Prophet

Semen will not be available at the sale but we will have the contact information for you to have it shipped to your farm. Buyers will be responsible for covering shipping costs. If you have any questions about the Semen Sale, please contact Daniel Rohrbaugh at 717-819-2471. Be sure to follow **PA Junior Angus Association on **Facebook**.**

SAVE THE DATE - June 15-17, 2017

PA Angus Breeders' Show

Huntingdon, PA

~Ask for PA Angus Assoc. Rate ~

Comfort Inn - 814-643-1600 - \$99.00 -5/24/17

Fairfield Inn - 814-643-3672 - \$115.00 -5/17/17

Motor Inn - 814-643-1133 - \$75.00 - 5/15/17



JUNIOR ROUNDUP

2017 Officer Team

PA Junior Angus Association

President, Daniel Rohrbaugh
Vice-President, Elizabeth Voight
Secretary, Kaitlin Bell
Assistant Secretary, Cailey Dahlquist
Treasurer, Grant Cash
Assistant Treasurer, Madison Weaver
News Reporter, James Voight
Assistant News Reporter, Courtney Dahlquist
Directors- (1 year term) Jade Zimmerman, Sam Parr, Justin Werner, Jacob Werner
Directors- (2 year term) Haley Sweitzer, Katelyn Taylor, Kiersten Baker, Grant Fitzgerald

Juniors Lead Angus Champions at 2017 MAJAC

Junior Angus exhibitors led 282 entries at the 2017 Mid-Atlantic Junior Angus Classic (MAJAC) Regional Preview Show, March 11-12 in Harrisonburg, Va. Randy Perry, Prather, Calif., evaluated the 99 owned females, 37 bred-and-owned females, 45 steers, seven bred-and-owned steers, eight bred-and-owned bulls, six cow-calf pairs and 80 Angus-based crossbred steers.

BK Gambling Man won the title of reserve grand champion bred-and-owned bull after first claiming reserve junior champion. Karli Berkheimer, Dillsburg, Pa., owns the April 2016 son of AHFF the Gambler 401B.

Elizabeth Trowbridge, Meshoppen, Pa., showed the reserve grand champion owned female. Cherry Knoll Ark Pride 1593 is an October 2015 daughter of Plum Creek Paradox 161B. She first won senior champion.

Conner Grim, Dover, Pa., showed the grand champion bred-and-owned steer. Shady Dell Zack 429 is an April 2016 son of Connealy Black Granite. He first won junior champion.

OWNED HEIFERS 99 Shown

Reserve Intermediate Champion Heifer: Beaver Creek Blackcap 673, Exhibitor: Conner Grim, Dover, Pa.

Reserve Late Junior Champion Heifer: Cherry Knoll Elsa 1640, Exhibitor: Michael Butz, Reinholds, Pa.

Senior Champion Female: Cherry Knoll Ark Pride 1593, Exhibitor: Elizabeth Trowbridge, Meshoppen, Pa.

Reserve Grand Champion Female: Cherry Knoll Ark Pride 1593, Exhibitor: Elizabeth Trowbridge, Meshoppen, Pa.

BRED-AND-OWNED HEIFERS 37 Shown

Intermediate Champion Heifer: Cherry Knoll May 1672, Exhibitor: Bryce Fitzgerald, West Grove, Pa.

Reserve Junior Champion Heifer: BK Haley 36, Exhibitor: Karli Berkheimer, Dillsburg, Pa.

BRED-AND-OWNED BULLS 8 Shown

Intermediate Champion Bull: BFN Insight 162, Exhibitor: Blake Nisewander, Greencastle, Pa.

Reserve Junior Champion Bull: BK Gambling Man, Exhibitor: Karli Berkheimer, Dillsburg, Pa.

Reserve Grand Champion Bull: BK Gambling Man, Exhibitor: Karli Berkheimer, Dillsburg, Pa.

BRED-AND-OWNED ANGUS STEERS 7 Shown

Intermediate Champion Steer: B&R Monster, Exhibitor: Kaitlin Bell, Nottingham, Pa.

Reserve Intermediate Champion Steer: BFN Speedy 164, Exhibitor: Blake Nisewander, Greencastle, Pa.

Junior Champion Steer: Shady Dell Zack 429, Exhibitor: Conner Grim, Dover, Pa.

Grand Champion Steer: Shady Dell Zack 429, Exhibitor: Conner Grim, Dover, Pa.

SHOWMANSHIP

Senior Showmanship

Champion: Claudia Hissong, Greencastle, Pa.



News from the
Switch
 (aka show winners)

Time to **POWER UP** with **BEAVER**

SINCE FEEDERS AREN'T \$2.00/lb ARE ALL YOUR CATTLE EARNING THEIR SPACE AT THE BUNK???

Yesterday average cattle or even poor performing cattle were turning a profit but since margins have tightened **we can only afford to own the best cattle.** The efficient, fertile, long lasting ones that work for you and me. The cheapest way to improve your herd's genetics is with a quality Angus bull. As cow-calf producers the number one thing affecting our bottom line is **"pounds of calves weaned/acre"**. At Beaver Creek our bulls are monitored for **pre weaning and post weaning performance.** In addition, we are very critical of selecting only the **long sided, deep bodied, thick ended, sound footed, fertile bulls** that will serve as excellent herd sires.

CREEK BULLS!!



COME EARLY!! FIRST COME FIRST SERVE!!
BUY NOW AND PICK UP ON APRIL 30th!!
CALL KYLE GRIM 717-324-9869

BCA Flawless 119

CALVING EASE with STYLE, MUSCLE, VOLUME, BALANCE, SOUND STRUCTURE & daughters that have PHENOMENAL UDDERS!!

Semen Available at Cattle Visions & Beaver Creek.
Also 10 units will be auctioned at the Finest Female Sale on March 31 at the Livestock Evaluation Center to support the PA Jr. Angus Association.





Performance Tested Angus
BULL & FEMALE SALE

**COW/CALF PAIRS
OPEN HEIFERS**

CALVING EASE BULLS
with carcass and growth



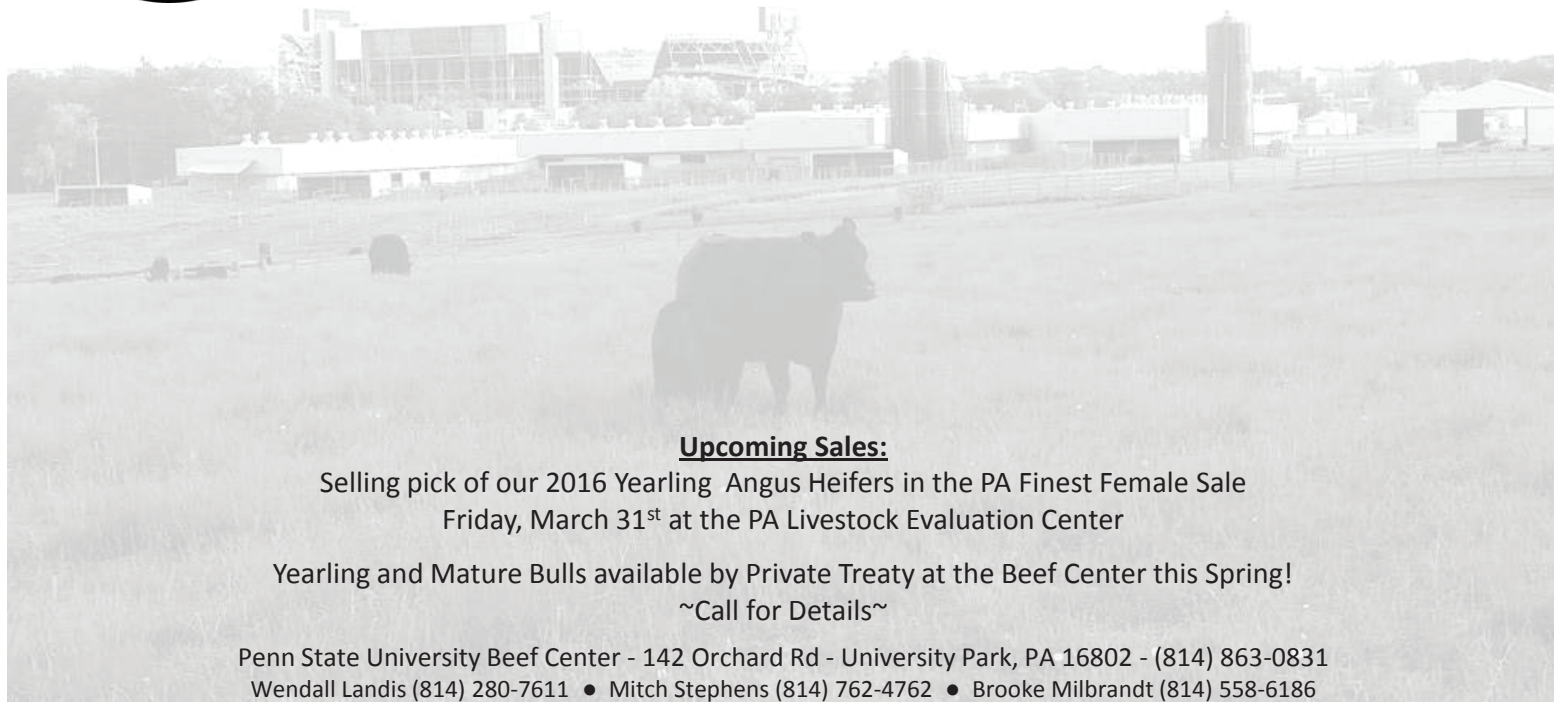
Friday • **April 28, 2017** • 3:00 p.m.

Held at the Farm in Mercer, PA

724-699-1966 • GREG@ANGUS.US • MCKEANBROS.COM
193 East Zahniser Road, Mercer, PA 16137



**Thank You to All Who Supported
Our First Online Production Sale!**



Upcoming Sales:

Selling pick of our 2016 Yearling Angus Heifers in the PA Finest Female Sale
Friday, March 31st at the PA Livestock Evaluation Center

Yearling and Mature Bulls available by Private Treaty at the Beef Center this Spring!

~Call for Details~

Penn State University Beef Center - 142 Orchard Rd - University Park, PA 16802 - (814) 863-0831
Wendall Landis (814) 280-7611 • Mitch Stephens (814) 762-4762 • Brooke Milbrandt (814) 558-6186

Dear Angus Breeder,

Just when we thought an early spring was here, the winter's cold arrived with vengeance, but the good news is spring is just around the corner! I hope you've all been having a good start to your calving season.

The spring sale season has officially arrived, as the first sales taking place this weekend. There will certainly be many great opportunities to purchase your new herd sire or add elite females to your herd. If you are in need of assistance bidding during a sale you cannot attend, please feel free to call me.

The regional sale and event calendar is listed below, and the American Angus Association [calendar](#) has all the sales for the country, as well as many of the [sale books](#). Also, if you would like me stop at your farm for a herd visit this spring during my travels, please feel free to contact me and I would happy to help take a look at your herd.

If you have or know of a high school graduate this May and entering college this fall, or a student currently enrolled in college, encourage them to apply for scholarships through the Angus Foundation. Applications must be postmarked by May 1, and guidelines can be downloaded from the Angus Foundation's [website](#).

I also wanted to make you aware that a new updated version of the [AAA Login](#) system will be implemented in April. If you are a user of the AAA Login system, you will be sent an email notification prior to the update, as well as receiving a notification in your login Message Center.

Another item to note from the Association: A new partnership now makes it easier than ever for Angus breeders to collect foot scores.

The American Angus Association announces its collaboration with participating universities to assess foot structure on behalf of breeders who seek help in assessing their herds. The new service allows animal science students and judging team participants to collect foot scores as they visit Angus operations.

It is available to all Association members, and compensation is voluntary and at the discretion of breeders. [Go online for more information](#) and to access a list of participating universities.

As always, please do not hesitate to contact me if you have any questions or need assistance. Please keep all of those affected by the wildfires in Kansas, Oklahoma, Colorado and Texas in your thoughts and prayers. The Association has compiled a [list of resources](#) for those interested in supporting recovery efforts.

Take care,

Take care,

Chris Jeffcoat

Regional Manager - DE, MD, NJ, NY, PA, VA, WV, NC and New England
282 Saint Lukes Rd.
Littlestown, PA 17340
Mobile: [717.476.1496](tel:717.476.1496)



American Angus Association
3201 Frederick Ave.
St. Joseph, MO 64506
[816.383.5100](tel:816.383.5100)
www.ANGUS.org



Regional Calendar:

3/31/2017: Pennsylvania PT Bull Sale – at Livestock Evaluation Center, Pennsylvania Furnace, PA

3/31/2017: Pennsylvania's Finest Female Sale – Livestock Evaluation Center, Pennsylvania Furnace, PA

4/10/2017: Cherry Knoll Farms Online Show Heifer Sale – West Grove, PA

4/28/2017: McKean Bros. PT Angus Bull & Female Sale – Mercer, PA

PENNSYLVANIA LIVESTOCK EVALUATION CENTER

44th Annual Performance Tested Bull Sale - Friday, March 31, 2017, NOON

- 57 Angus bulls are cataloged for the sale—they are listed inside this newsletter, averaging 4.73 pounds/day gain on test after the test was completed at 112 days.
- All bulls are ultrasonically scanned for back fat thickness, ribeye area and marbling, over 50% are Genomic Enhanced pedigrees, and over 50% are Calving Ease!
- All bulls are given a complete breeding soundness and semen evaluation prior to the sale.
- These Angus bulls represent many of the top pedigrees in the beef industry. These are the top 65% of the Angus bulls that were on test.
- Educational exhibits, trade show and purebred cattle exhibits also featured .
- View the videos of the bulls on www.youtube.com. The catalog can be found at www.livestockevaluationcenter.com. A link at this site shows the videos!

Lot #	LEC #	Reg. No.	Birth Date	BW	Bull Owner/Address	Sire	Dam's sire	Adj. 205 wt.	Ave. Daily Gain	Frame Score	Adj. Fat	Adj. Loins Eye Area	Weight/DOA	Adj. 365 wt	Pelvic	Scrota I	%IMF	Index	\$B
1	245	18548387	3/10/16	98	Triple J. Farm, John Yenny/ Daisytown, PA- 724-579-6350/ triplejblackangus@windstream.net	WayView Tobin 0257-B30	HARB Pendleton 765 JH [AMF-CAF-DDF-M1F-NHF-OHF-OSF]	769	6.00	7.2	0.35	14.6	4.13	1515	190	38.5	2.52	129	135.9
2	305	18562527	2/17/16	74	Kohr Farms, Alexis Cash/ York, PA- 717-764-4261/ jim@kohrfarms.com	VAR Ranger 3008	Rito 9M25 of Rita 5F56 Pred [DDC-AMF-CAF-M1F-NHF-OHF-OSF]	651	5.67	6.8	0.42	15	3.75	1364	185.75	37	2.99	128	171.22
3	302	18563097	3/17/16	78	Kohr Farms, Alexis Cash/ York, PA- 717-764-4261/ jim@kohrfarms.com	VAR Discovery 2240 [AMF-CAF-DDF-M1F-NHF-OHF-OSF]	TC Aberdeen 759 [AMF-CAF-DDF-M1F-NHF-OHF-OSF]	687	5.37	6.1	0.58	16.6	4	1485	185.75	37	4.65	127	170.15
4	303	18562523	3/22/16	82	Cash Family Angus, Grant Cash/ York, PA- 717-779-0614/ chadcash2@comcast.net	VAR Discovery 2240 [AMF-CAF-DDF-M1F-NHF-OHF-OSF]	TC Aberdeen 759 [AMF-CAF-DDF-M1F-NHF-OHF-OSF]	670	5.35	5.9	0.47	14.7	3.8	1413	173.75	41	3.67	124	162.8
5	423	18544377	4/6/16	70	Mitchell Farms, Matthew Mitchell/ Reinholds, PA- 717-336-5459/ mitchellfarms@dejazzd.com	Connealy Final Product [AMF-CAF-D2F-DDF-M1F-NHF]	Connealy Final Solution [AMF-CAF-DDF-M1F-NHF-OHF]	807	5.29	5.9	*.43	*14.4	3.94	1437	157.75	35.5	*1.7	115	117.26
6	310	18513618	3/20/16	90	Rolling Rock Angus, Jeff Edwards/ Gloversville, NY- 518-598-6602-jedwards2224@gmail.com	WR Journey-1X74 [DDF-OHF]	EXAR Upshot 0562B [AMF-CAF-D2F-DDF-M1F-NHF-OSF]	704	5.11	6.9	0.5	15.6	3.65	1342	164	38	3.87	115	139.27
7	201	18549679	3/3/16	75	Hawthorn Valley Farm, Jesse Alspaugh/ Richland, PA - 717-821-2597/ agland@comcast.net	RB Tour Of Duty 177 [AMF-CAF-D2F-DDF-M1F-NHF-OSF]	Woodhill Foresight [AMF-CAF-DDF-M1F-NHF-OHF-OSF]	781	4.87	5.6	0.32	15.4	3.68	1342	167.25	39	3.63	115	153.64
8	110	18558296	2/7/16	71	Tuckaway Angus, Susan Godfrey/ Bradford, PA- 814-363-9885/ godfreesusan@yahoo.com	EXAR Fortify 1447B	BC 7022 Raven 7965 [AMF-CAF-D2F-DDF-M1F-NHF-OHF-OSF]	812	5.54	7.6	0.38	15.2	4.13	1505	162.75	37.5	2.76	115	92.65
9	236	18425991	3/3/16	87	Shipman Farms, James Shipman/ Sunbury, PA- 570-847-1382-rikers_island@yahoo.com	B/R Ambush 28 [AMF-CAF-DDF-NHF]	GAR Ingenuity [DDC]	803	4.85	6.5	0.41	15.7	3.69	1344	144	35.5	3.04	115	153.03
10	332	18477028	3/30/16	77	Seefeldt Angus, Gary Seefeldt/ Port Allegany, PA- 814-598-9452/ ghseefeldt@mckeancountypa.org	GAR Prophet [CAF-DDF-M1F-NHF-OHF]	GAR New Design 5050 [DDC-AMF-CAF-M1F-NHF-OHF-OSF]	802	5.15	7.0	*.34	*12.4	3.83	1394	174	40	*3.15	114	126.36
11	106	18562525	1/19/16	94	Kohr Farms, Grant Cash/ York, PA- 717-764-4261/ jim@kohrfarms.com	VAR Ranger 3008	Connealy Confidence 0100 [CAF-DDF-OHF-OSF]	671	4.95	5.3	0.47	15.1	3.56	1290	178.75	38	3.9	114	147.3
12	203	18497648	4/2/16	74	Bar-Z-Angus, Scott M Barzak DVM/ Conneaut Lake, PA- 814-573-0130/ sbarzak@yahoo.com	PVF Insight 0129 [AMF-CAF-D2F-DDF-M1F-NHF-OSF]	Sitz Upward 307R [AMF-CAF-D2F-DDF-M1F-NHF-OSF]	812	4.80	6.4	*.31	*11.9	3.89	1413	156.75	40	*1.97	113	138.33
13	209	18483701	1/10/16	77	Cash Family Angus, Alexis Cash/ York, PA- 717-779-0614/ chadcash2@comcast.net	VAR Generation 2100	EXAR Upshot 0562B [AMF-CAF-D2F-DDF-M1F-NHF-OSF]	647	5.21	5.0	0.47	13.6	3.34	1211	169	38	3.31	113	138.52
14	140	18564944	2/3/16	75	Voight Family Farm, Wilhelmina E. Voight/ Fredericksburg, PA - 717-821-0699/voightwlv@gmail.com	AAR Ten X 7008 SA [AMF-CAF-D2F-DDF-M1F-NHF-OHF-OSF]	Hoover Dam [AMF-CAF-DDF-M1F-NHF-OHF]	721	4.69	6.3	0.47	14.8	3.72	1352	175	40	3.57	113	151.91
15	403	18550291	3/14/16	75	Hawthorn Valley Farm, Jesse Alspaugh/ Richland, PA - 717-821-2597/ agland@comcast.net	Baldrige Waylon W34 [AMF-CAF-DDF-NHF]	Sinclair Net Present Value [AMF-CAF-DDF-M1F-NHF-OHF-OSF]	652	5.26	5.7	0.41	13.5	3.49	1282	157.25	35.5	3.9	113	126.21
16	308	18503805	3/16/16	78	Finger Lakes Cattle Co., Tim Dennis & John Kriese/ PennYan, NY- 315-536-2769/ tdennis@trilata.com	GND Maximo B415	SAF Directive [AMF-CAF-DDF-M1F-NHF-OHF-OSF]	686	4.62	6.6	0.51	15	3.8	1404	159.5	41	3.49	112	144.99
17	235	18425992	3/30/16	82	Shipman Farms, James Shipman/ Sunbury, PA- 570-847-1382-rikers_island@yahoo.com	Baldrige Waylon W34 [AMF-CAF-DDF-NHF]	Summitcrest SKY Walker 0W17 [AMF-NHF]	849	4.37	5.6	*.42	*14.6	3.8	1367	156	37.5	*4.04	112	161.28
18	109	18557132	2/28/16	59	Tuckaway Angus, Susan Godfrey/ Bradford, PA- 814-363-9885/ godfreesusan@yahoo.com	VAR Generation 2100	Hoover Dam [AMF-CAF-DDF-M1F-NHF-OHF]	820	4.55	6.0	0.41	16.9	3.93	1434	173.75	39	2.7	111	136.88
19	143	18396469	1/19/16	83	Weaverland Valley Farms, Larry & Barbara Weaver & Brady Ebersole/ New Holland, PA- 717-468-1553/ weaverland@frontiernet.net	Connealy Courage 25L [AMF-CAF-DDF-NHF-OSF]	TC Freedom 104 [AMF-CAF-DDF-M1F-NHF-OHF-OSF]	771	5.15	5.8	0.57	14.3	3.68	1345	177.25	38	4.02	110	109.7
20	243	18564878	4/14/16	95	Voight Family Farm, Delbert H. Voight/ Fredericksburg, PA- 717-821-0699/ delvoight@gmail.com	AAR Ten X 7008 SA [AMF-CAF-D2F-DDF-M1F-NHF-OHF-OSF]	Dr J Analyst M250 [NHC-AMF-CAF-DDF-M1F-NHF-OHF-OSF]	733	4.09	6.4	*.37	*14	4.05	1523	194	35	*2.9	110	149.96
21	444	18548384	4/10/16	85	Triple J. Farm, John Yenny/ Daisytown, PA- 724-579-6350/ triplejblackangus@windstream.net	WayView Tobin 0257-B30	Connealy Shrek 4242 [DDF]	672	4.52	6.9	*.35	*11.9	3.73	1402	151.75	38	*2.46	110	139.44
22	440	18504691	3/24/16	78	Stewart Angus, Douglas Stewart/ Rome, PA - 570-744-2064	EF Authentic 0829 [AMF-CAF-D2F-DDF-M1F-NHF-OSF]	TC Gridiron 258 [AMF-CAF-DDF-M1F-NHF-OHF-OSF]	597	5.03	6.0	0.36	14.8	3.66	1375	154.5	38	2.81	109	109.61
23	443	18548385	4/6/16	78	Triple J. Farm, John Yenny/ Daisytown, PA- 724-579-6350/ triplejblackangus@windstream.net	WayView Tobin 0257-B30	PA Power Tool 9108 [AMF-CAF-DDF-M1F-NHF-OHF]	708	4.92	6.5	*.29	*14.2	3.55	1305	150.75	38.5	*3.17	108	118.11
24	401	18557194	3/24/16	75	Hawthorn Valley Farm, Jesse Alspaugh/ Richland, PA - 717-821-2597/ agland@comcast.net	EXAR Denver 2002B [AMF-CAF-DDF-NHF]	Woodhill Foresight [AMF-CAF-DDF-M1F-NHF-OHF-OSF]	687	4.68	5.4	0.27	13.2	3.33	1215	154.5	36	3.73	108	142.16
25	317	18565113	1/26/16	88	Ben Kline Cattle, Ben Kline/ Clearfield, PA- 814-577-2211/ bdk5062@psu.edu	VAR Generation 2100	BC Eagle Eye 110-7 [AMF-CAF-DDF-M1F-NHF-OHF-OSF]	562	4.76	5.2	0.24	13.7	3.15	1138	173	38	3.73	108	146.82
26	125	18520338	2/4/16	84	Rains Angus, Dale Rains/ Mercer, PA- 724-662-2487/ rainsangus@zoominternet.net	RB Tour Of Duty 177 [AMF-CAF-D2F-DDF-M1F-NHF-OSF]	Lau Decade [AMC-CAF-DDF-M1F-NHF-OHF]	797	4.42	6.1	0.47	13.5	3.7	1356	175.25	39.5	2.66	107	137.05
27	244	18587960	2/5/16	65	Voight Family Farm, Delbert H. Voight/ Fredericksburg, PA- 717-821-0699/ delvoight@gmail.com	AAR Ten X 7008 SA [AMF-CAF-D2F-DDF-M1F-NHF-OHF-OSF]	KCF Bennett Absolute [AMF-CAF-D2F-DDF-M1F-NHF-OHF]	670	4.53	5.0	0.46	13.3	3.32	1210	149.5	35	3.45	107	146.68
28	233	18469178	3/26/16	94	Seefeldt Angus, Jordan Seefeldt/ Port Allegany, PA- 814-331-8174/ ghseefeldt@mckeancountypa.org	JLL Upshot Predestined 134 [DDF]	SS Objective T510 0T26 [AMF-CAF-DDF-M1F-NHF-OHF-OSF]	799	4.64	6.1	*.35	*12.2	3.91	1430	180.5	38.5	*3.9	107	112.44
29	417	18692642	4/7/16	64	Knapp Time Farm, Michael and Debbie Knapp/ Hooversville, PA - 814-659-9189/ knappm9819@gmail.com	KTF Cash K410	Sinclair Open Range 2Q23 [AMF-CAF-DDF-M1F-NHF-OHF-OSF]	779	4.85	6.6	*.44	*13.9	3.73	1358	165	37	*3.17	107	108.74
30	224	18564866	2/6/16	79	Kerr Cattle Co., Mike and Paula Kerr/ Clearfield, PA- 814-590-9603-kerrcattleco@gmail.com	PVF Insight 0129 [AMF-CAF-D2F-DDF-M1F-NHF-OSF]	Summitcrest High Prime 0H29 [AMF-CAF-DDF-M1F-NHF-OHF-OSF]	612	4.45	5.4	0.27	13.7	3.31	1202	163.75	38.5	3.8	106	149.6
31	215	18506656	2/3/16	82	Cramer Farm, Dennie Cramer/ Shade Gap, PA- 814-259-3368	Cash Money Z211 801U 919	SAV Brand Name 9115 [AMF-CAF-DDF-M1F-NHF-OHF-OSF]	754	4.76	5.9	0.5	14.5	3.57	1306	167.5	37.5	3.5	106	117.06
32	316	18564979	3/24/16	81	Kerr Cattle Co., Mike and Paula Kerr/ Clearfield, PA- 814-590-9603-kerrcattleco@gmail.com	PVF Insight 0129 [AMF-CAF-D2F-DDF-M1F-NHF-OSF]	SS Objective T510 0T26 [AMF-CAF-DDF-M1F-NHF-OHF-OSF]	664	4.61	5.9	0.43	14.9	3.55	1310	161.5	37.5	3.54	106	125.6
33	402	18557195	3/14/16	75	Hawthorn Valley Farm, Jesse Alspaugh/ Richland, PA - 717-821-2597/ agland@comcast.net	EXAR Denver 2002B [AMF-CAF-DDF-NHF]	Woodhill Foresight [AMF-CAF-DDF-M1F-NHF-OHF-OSF]	624	4.66	5.9	0.39	13.3	3.33	1226	170	36.5	3.44	106	131.54
34	116	18483252	2/22/16	85	Cheer-Up Farm, John Iovieno/ Hignnaum, CT- 860-395-4833/ johniovieno@gmail.com	Rito 919 of Rita 5F56 616 [AMF-DDF-NHF]	VAR Reserve 1111 [AMF-CAF-DDF-M1F-NHF]	792	4.25	6.1	0.49	15	3.59	1312	179.75	38	5.71	106	143.96
35	242	18561669	2/4/16	85	River Bend Farm, Corne Vogelaar/ Far Hills, NJ- 908-234-1377/ corne@rbfangus.com	Sitz Investment 660Z [AMF-CAF-D2F-DDF-M1F-NHF-OSF]	Boyd New Day 8005 [AMF-CAF-DDF-M1F-NHF-OHF-OSF]	683	4.93	5.4	0.4	14.2	3.49	1270	149.25	38	2.74	106	108.64
36	342	18410010	2/2/16	#####	Heron Run Farm, Mac & Louis Spann/ Washington, NJ- 908-537-6110/ max@maxspann.com	Schiefelbein Effective 61 [AMF-CAF-D2F-DDF-M1F-NHF-OSF]	Connealy Thunder [AMF-CAF-D2F-DDF-M1F-NHF-OHF-OSF-RDF]	632	4.97	5.5	0.42	13.1	3.43	1244	167.25	40	2.9	105	105.69
37	225	18562528	2/24/16	70	Kohr Farms, James Kohr/ York, PA- 717-764-4261/ jim@kohrfarms.com	AAR Ten X 7008 SA [AMF-CAF-D2F-DDF-M1F-NHF-OHF-OSF]	EXAR Upshot 0562B [AMF-CAF-D2F-DDF-M1F-NHF-OSF]	655	4.08	5.5	0.55	14.6	3.54	1294	159.75	38	3.9	104	146.86
38	307	18506658	2/13/16	80	Cramer Farm, Dennie Cramer/ Shade Gap, PA- 814-259-3368	Cash Money Z211 801U 919	TC Aberdeen 759 [AMF-CAF-DDF-M1F-NHF-OHF-OSF]	648	4.68	5.9	0.42	14.9	3.43	1247	151.5	38.5	2.76	104	114.96
39	306	18506659	3/20/16	84	Cramer Farm, Dennie Cramer/ Shade Gap, PA- 814-259-3368	Cash Money Z211 801U 919	SAV 004 Predominant 4438 [AMF-CAF-DDF-M1F-NHF-OHF-OSF]	751	4.70	6.9	0.42	15.6	3.61	1314	146.5	36	2.91	103	103.79
40	205	18538740	3/13/16	82	Harry & Emily Blessing/ Seven Valleys, PA- 717-586-6857/ blessing10707@hotmail.com	GAR Prophet [CAF-DDF-M1F-NHF-OHF]	Roseda Designed P083	782	4.31	6.8	0.53	14.1	3.62	1314	164.25	40	3.84	102	123.27
41	214	18578691	3/24/16	78	Thunder View Farms, Philip & Richard Coombe - Grahamsville, NY, 845-985-2189/ tvangus@thunderviewfarms.com	R/M Turning Point 1C94 [DDF]	NCC Midland N001 [AMF-NHF]	714	4.54	5.7	*.43	*14.5	3.86	1427	154.5	40	*3.72	102	95.06
42	333	18458615	3/18/16	68	GND Angus, Gerald Segelstrom/ West Alexander, PA- 724-663-0125/ gndangus@verizon.net	Connealy Uptown 098E [DDF]	RV Ultimate X032	622	4.28	5.3	0.4	14.2	3.3	1216	153	36	3.41	102	133.26
43	414	18515269	3/15/16	70	AJK Ebony Acres, Adam Kauf/ Woodbury, PA- 814-766-2235-acwkauf@yahoo.com	Connealy Black Granite [AMF-CAF-D2F-DDF-M1F-NHF-OHF-OSF]	TC Vance 011 [AMF-CAF-D2F-DDF-M1F-NHF-OSF]	616	4.60	5.0	0.43	13.2	3.33	1226	150.25	39	3.16	102	112.58
44	315	18483258	4/4/16	62	Ebony Farm, Lance & Sheila Kauf/ West Sunbury, PA- 724-894-2392/ bootskauf@zoominternet.net	Whitestone Conviction 4010	Daybreak Genesis 928 [NHF]	742	4.34	5.5	*.35	*13.3	3.56	1293	155.25</				

PA ANGUS ASSOCIATION BREEDERS' SHOW ENTRY AND SPONSORSHIP FORM

Please mail along with entry fee and sponsorship donation by May 15, 2017

NAME _____

DIAMOND (\$1000), GOLD (\$500), SILVER (\$250), BRONZE (\$100)
OR BLUE RIBBON SPONSOR (\$99-1)

Total \$ _____

TOTAL CHECK ENCLOSED
\$ _____

I would like to volunteer to help in the following areas: *Show ring, cattle check in, picture set up area, food, judging contest, junior activities, maintenance, pooper scooper, other* _____

**Please make check payable to PA Angus Association and mail by May 15th to:
Jamie Brozman, 354 Townshipline Rd., Nazareth, PA 18064**

HOW YOU CAN BE OF HELP AT THE BREEDERS SHOW!!

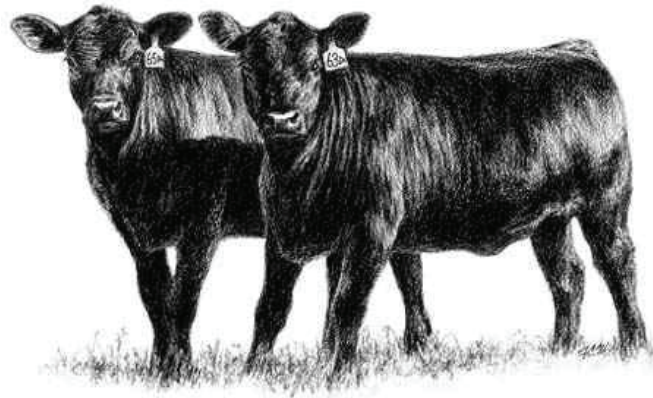
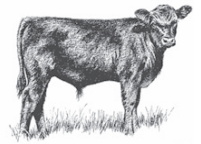
The Breeders Show is certainly one of the high points of the Angus year. You exhibit your cattle, renew old friendships, make new ones, spend quality time with your family, eat great food and participate in the fun auction and judging contests.

The Breeders Show takes a lot of money to operate. It also takes a lot of volunteers. We hope you will consider contributing in order to ensure the continued success of the show. We have many new members who may not understand the total picture regarding the financing of this show. While we receive some funding from the State, money also comes from entry fees and some from the generous contributions of our members. Sponsorships are available in the categories listed above. Please consider where you can help. You will be recognized throughout the three-day event!

ALL SPONSORS RECEIVE RECOGNITION IN THE SHOW CATALOG AND NEWSLETTER; RECOGNITION BANNER IN SHOW RING (\$100 OR MORE); PICTURES TAKEN WITH THE CHAMPIONS (\$250 OR MORE).

WE THANK YOU FOR YOUR SUPPORT!

Please consider sponsoring this family fun ANGUS event, the show is strictly funded by generous donations, join us June 15 – 17, 2017.



New Opportunity to Market Replacements through the Pennsylvania Premier Bred Heifer Program

In an effort to aid the PA beef industry in both sourcing and marketing quality replacement heifers, Penn State and the Pennsylvania Department of Agriculture are promoting an on farm heifer development program that qualifies heifers who meet the guidelines for a commercial bred heifer sale this fall.

Heifer development programs have been very successful across the country. Among the first created was in Missouri, and still operates today as the Show-Me-Select Heifer program. The Show-Me Select Heifer Programs was launched in 1996, and was modeled after a similar program in Kentucky called the Bourbon County Elite Heifer Program. Its intention was to better the management and quality of replacement heifers utilized in commercial cow herds through health, nutrition, and genetics. Additionally, it created stronger relationships between veterinarians and extension to better transmit information to beef producers.

Over the past 20 years, it has not only accomplished the goals of improved management and quality, but has become a huge added value program with more than 4,500 heifers enrolled annually. Cow Calf operators from across the country has sought out heifers developed under stringent guidelines due to the insurance of top quality replacements that manage risk through additional information and management. Due to the success of this program, many other states have initiated similar programs to gain added value for their states replacement heifers.

The PA Premier program has set basic goals for better management of replacement heifers through health, nutrition, and genetics. Additionally, this program gives an opportunity to capture added value for producers willing to invest added management and time.

For heifers to qualify for consignment, they need to have gone through a basic vaccination protocol, have a reproductive score, have a minimum pelvic area of 150 cm², at least 60 days bred at time of sale, and bred to a calving ease bull. Additionally, surrounding states that are eligible to participate in the PA Performance Bull Test are also encouraged to participate in the PA Premier Bred Heifer Program. This program is focused on marketing quality commercial replacements. With that in mind, crossbred or registered cattle are encouraged to participate in the program. For more information visit livestockevaluationcenter.com; contact Ben Williamson via email at bcw13@psu.edu or phone at (814) 867-4917 or Greg Hubbard at g Hubbard@pa.gov or phone at (814) 238-1851.

PENNSYLVANIA FARM SUPPLIERS & RESOURCES

717-548-1351
Fax 717-548-0376

1664 Furniss Rd.
Drumore, PA 17518

FREY'S LIVESTOCK SUPPLY

*Show Supplies • Livestock Trailers
Sharpening & Repair • Show Feeds
Club Calves • Registered Angus Cattle*

www.freysupply.com email: ffrey@freysupply.com



Gettysburg, PA

1-800-649-SHOW

heartfeltlivestocksupply.com

heartfeltsupply@gmail.com



JDH Cattle Company

Registered Angus Cattle



Custom Fitting Show/Sale Cattle
Herd Consulting-Sale Ring Service
Livestock Hauling • Hoof Trimming Service
Dealer For Vita Farm & Sure Champ



John & JoAnn D. Hausner
5550 Pine Hill Rd. • Dover, PA 17315
717-292-3053 Home • 717-968-0971 Cell



Mike Shanahan

(518) 598-8869

FAX (646) 277-1161

P.O. Box 338

Ghent, NY 12075

mike@cattlepromotions.com

- Cattle Photography & Videography
- Marketing/Advertising Consultant
- Auction Planning & Ring Service
- General Marketing & Consulting
- Purchasing Agent
- Website Management

www.cattlepromotions.com

GENETIC VISIONS, LLC

Cattle Reproduction & Embryo Transfer

James F. Evans, VMD

3466 Breezy Point Road, McConnellsburg, PA 17233

717-485-0532/Fax 717-485-0539



Quality Livestock Equipment

372 Puseyville Road, Quarryville, PA 17566

David J. Wylie
Salesman

Office: 717.786.2146

Fax: 717.786.7509

Cell: 717.801.6685

freybrothers@epix.net

Visit us on the web at: www.freybrothersinc.com

EASTERN STATES LIVESTOCK SYSTEMS

Office: (800) 242-3240
Cell: (814) 977-0848
Home: (814) 735-4554

1563 Oak Grove Road
Breezewood, PA 15533

Frank "Butch" Otto
easternstateslivestock.com

Accelerated Genetics is focused on being the
producer's trusted first choice!



Steve McPherson
Regional Beef Specialist
336-639-4631 | smcpherson@accelgen.com

Kyle Grim, Thomasville, PA Ph: 717-324-9869

Travis Book, New Castle, PA Ph: 724-944-0670

BORN 1941 | 1-800-451-9275 | www.accelgen.com

NO BULL TOO BIG OR NASTY ZIMMERMAN'S CUSTOM FREEZING

Semen Freezing Since 1983

Semen Fertility Evaluations

www.semenfreezing.com

Harry Zimmerman Ph. 717-355-2048
131 Redwell Rd. Cell 717-940-1430
New Holland, PA 17557 Fax 717-354-9372

When It Comes To Marketing
We Don't Sit Around Waiting For
The Cows To Come Home
Call Us For Results



Auctioneer - Sale Management - Private Treaty Sales
Photography/Video - Genetic Consulting



Ken Brubaker
540/908-5799
ken@brubakersales.com
www.brubakersales.com



PENNSYLVANIA ANGUS ASSOCIATION BREEDERS



SUNRISE CLUB CALVES

Paul & Beth Wingard
(814) 782-3992

www.clubcalves.com/sunriseclubcalves.htm

6667 Rt. 322 Shipperville, PA 16254

Visitors Always Welcome

Mt. Pisgah Angus

Registered Angus Cattle

1603 Pisgah Rd.
Troy, PA 16947

570-297-4206
Fax 570-297-9910



KAREN GILLILAND

E-mail: kgquilter@hotmail.com



Penn State University Beef Center

142 Orchard Rd. University Park, PA 16802
Beef Center: (814) 863-7611

Wendall Landis: (814) 280-7611 email: wlandispsu@gmail.com
Mitch Stephens: (814) 762-4762 email: mjs5230@psu.edu
Brooke Milbrandt: (814) 558-6186 email: bmilbrandt@gmail.edu

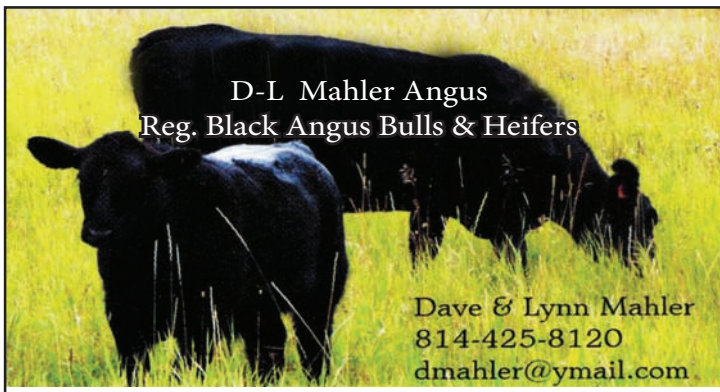
Visitors Welcome to our Farm and Campus at all Times!



McKean Family
193 East Zahniser Road
Mercer, PA 16137
(724) 475-4450

peggymckean@windstream.net

**Annual Bull Sale every APRIL,
watch for details!**



D-L Mahler Angus
Reg. Black Angus Bulls & Heifers

Dave & Lynn Mahler
814-425-8120
dmahler@ymail.com

HJM Cattle Company



Reg. Angus, Maine - Anjou & Club Calves
Kevin, Karen Fuls and Family
Heather, Keith Fessler and Family
C: 610-389-5289 H: 610-693-5009
Robesonia, PA 19551

WORK LAND & CATTLE
2 WORK PARKWAY
UNIONTOWN, PA 15401



WATCH FOR OUR
ANNUAL PRODUCTION
SALE

Bob & Pam Work
Keith & Linda Rooker
Bob: 724-880-5654 • Keith: 412-691-4913
Kevinrooker@yahoo.com

EBONY FARM – REGISTERED ANGUS

Featuring

“Whitestone Conviction 4010” AAA # 17852403

Lance & Sheila Kauf
111 Manuel Road
West Sunbury, Pa 16061

bootskauf@zoominternet.net 724-894-2392

Lisnageer Farm

789 Cedar Knoll Rd.
Coatesville, PA 19320
610.383.9453
Bill & Cheryl Fairbairn



Registered Angus Cattle
“Butts and Guts on Grass”



HERR
ANGUS FARMS

Dennis & Dottie Byrne

25 Airport Road
Nottingham, PA 19362
Phone: (610) 932-5977
Cell: (610) 662-6102
Email: dennis.byrne@herrs.com

PENNSYLVANIA ANGUS ASSOCIATION BREEDERS



KNAPP TIME FARM

MICHAEL & DEBBIE KNAPP
258 School Road
Hooversville, PA 15936
(814) 754-9968

QUALITY HOME GROWN PRODUCTS



A Historical Herd
Registered Angus Cattle
AHIR • Certified • Accredited
www.errer.com

Bob Hay Farm Manager

Owned and operated by
Riggs Industries, Inc.

499 Riggs Street
Friedens, PA 15541
Phone: (814) 445-4440
Fax: (814) 444-1302
Home: (814) 445-2008
Cell: (814) 442-5965
Email: bkh@lseci.com



REGISTERED ANGUS

Larry & Barbara Weaver
641 Spruce Road
New Holland, PA 17557
717-354-7477
Cell: 717-468-1553
Email: weaverland@frontiernet.net

COLE'S ANGUS



REGISTERED ANGUS SINCE 1959

57 LANIK ROAD
BENTLEYVILLE, PA. 15314
Phone: 724-258-2394

E-MAIL: kayboo2@yahoo.com

BREEDING ONLY TO THE TOP A-I SIRES
CERTIFIED • ACCREDITED HERD

YOUR BUSINESS CARD
AD HERE
FOR ONE YEAR
\$100
CONTACT THE SECRETARY!

ENDLESS MOUNTAINS ANGUS FARM

Registered Black Angus
Gene & Valerie Trowbridge and Family
570-833-4482
emanusfarm@frontier.com
6290 State Route 3001
Meshoppen, PA 18630

Gaylan - Summit Angus Farms

*Your Northeast Connection
for Commercial Bred Heifers*

Frank "Butch" Otto
Cell (814) 977-0848
Office (800) 242-3240
Home (814) 735-4554

WindSwept Angus LLC

Premium Grass Fed - Grass Finished Beef

Steven Semkowicz
203-803-7809
semkowicz@hotmail.com

Cattle for Sale
www.windsweptangus.com

Quiet Heart Farm



Registered Black Angus

Bill & Eshton Ritenour
724-455-8309 Barn
507-384-2870 Cell

P.O. Box 47
Melcroft, PA 15462



Pure breeder type Angus
Seed saver genetics for over 45 years

Samuel J. Wylie, III & Sherrill
2336 Adams Run Road
New Paris, PA 15554
814-839-0116
Cell: 814-889-9196
octoraro@nb.net
www.octoraroangus.com

PENNSYLVANIA ANGUS ASSOCIATION BREEDERS




MARGARET H. DUPREY
TIM FITZGERALD
 Cattle Manager

610 . 869 . 9455
 Cell 484 . 368 . 7456
 Fax 610 . 869 . 8279
 Email fitzatkf@aol.com

142 Wilson Road
 West Grove, PA 19390

Em Brook Farm **Em Brook Angus**



Rick Emerick
 Richie Emerick
 Ryan Emerick

2970 Helixville Road
 Schellsburg, PA 15559
 814.733.4552
 embrook@Embarqmail.com

www.EMBROOKFARM.COM



TRIPLE N FARMS

Gene Nolt 717-669-7296
 Ryan Nolt 717-808-9065

REGISTERED ANGUS

143 KURTZ RD NEW HOLLAND, PA 17557

Just Enuff



Angus

Jamie, Jerry, Ethan &
 Olivia Brozman
 Ned & Linda Hower

Email
JustEnuffAngus@gmail.com

354 Townshipline Rd. Nazareth, PA 18064
 Home (610)-837-3866 Cell (484)221-3455
 Registered Angus Cattle Tame Show Calves
 Website/Facebook – www.justenuffangus.com

SPRING HOPE



FARM

Jake & Becky Yohe
 Phone: (302) 893-9891

Dennis & Dottie Byrne
 Phone: (610) 662-6102




230 McCoury Road
 Nottingham, PA 19362

Mitchell Farms (H) 717-336-5459
 80 Martin Drive (C) 484-332-3965
 Reinholds, PA 17569

Matthew & Jeff Mitchell

mitchellfarms@dejazzd.com mnm5237@psu.edu



Precision Diagnostics
 specializing in reproductive management

30 Day Cattle Blood Pregnancy Test

- Rapid results
- Safe for embryo
- Accurate
- Inexpensive
- Less Invasive
- Bio-secure


Call for blood sampling kit: 717-354-2178
www.precisiond.com

NICHOLS
GRAND VIEW FARM
 Registered Angus Cattle

814-684-5790 gvfkrn@yahoo.com

Donnie 814-934-7047 Karen 814-934-4977 John 814-934-9457 William 814-207-6730

5415 Nichols Road, Tyrone, PA 16686



LOWRY'S FARM
 REGISTERED ANGUS
 290 LYNN PORTAL ROAD
 WASHINGTON, PA 15301

JAMES LOWRY
 OWNER

(724) 345- 3716
JLOWRY290@VERIZON.NET



GND Angus
 Gerald &
 Denise Segelstrom
 Registered Angus Cattle

1035 McGuffey Road
 West Alexander, PA 15376
 724-663-0125 • gndangus@verizon.net